

Pleated Blinds Use and Care Instructions

Our pleated blinds are a superior quality, made-to-measure product, made using advanced surface treatment technologies.

Only a qualified specialist can carry out the measuring, installation, removal and repair works.

Incorrect installation may damage the product or the interior. It may also result in injury.

The manufacturer must confirm any design changes.

The warranty doesn't apply to any mechanical damage resulting from incorrect or irresponsible use.

User Guide

Before raising or lowering the blind, ensure there are no obstructions that may prevent the blind from moving freely.

Pleated blinds can be operated manually, with a chain, handle or an electric motor (i.e. with a switch mounted on the wall, or with remote control).

Chain or cord-operated blinds are operated by pulling the chain or cord down.

The chain must be pulled down only vertically (the direction in which the string is pulled must be parallel to the window). Do not pull the chain too hard - or you might break it.

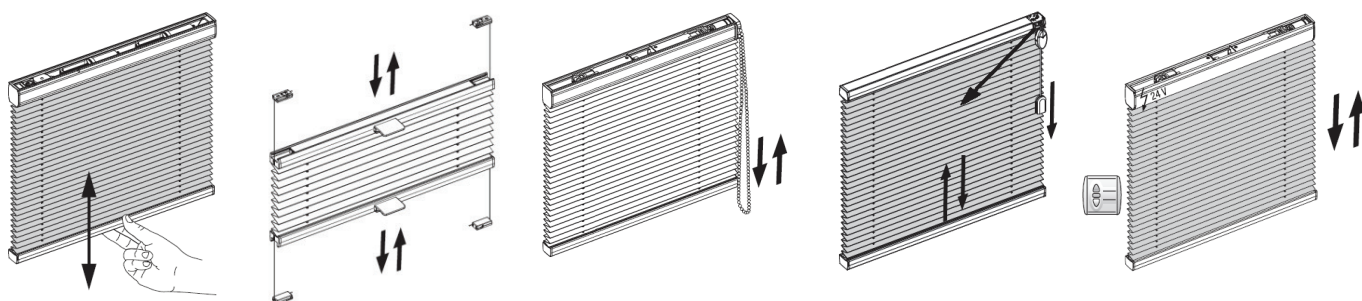
To raise the blind, pull the cord down (along the window); to lower the blind - unlock the cord by pulling it slightly toward the left.

Operating your blind with a handle: raise or lower the blind by pulling the handle up/ down.

Operating your blind with a wall switch: raise the blind by pressing the UP button; lower it by pressing the DOWN button. Pressing the STOP button will stop the blind in its current position.

The same applies to remote control blinds. Remote control installation is described in the installation manual.

If any mechanical damage is caused to the wall mounted switch or the remote control - or if any other physical damage is caused as a result of improper maintenance or use (e.g. water/ dust/ mud damage), the warranty will not apply.



Maintenance

Protect the product from aggressive environments - smoke, grease, and grime, or steam can get the blinds dirty, or cause damage.

If the materials are affected by mould caused by poor ventilation and damp in the house - the warranty will not apply.

The product should be cleaned with care, using a soft brush or dusting cloth. Attach a special soft dusting brush when using a vacuum cleaner to remove dust.

Motorised blinds should NEVER be washed due to their electrical components.

Blinds operated by a chain, cord or handle can be washed using the following instructions.

Don't use aggressive conventional cleaners (e.g. bleach), as they may damage the fabric. If you don't follow these instructions, the warranty will not apply.

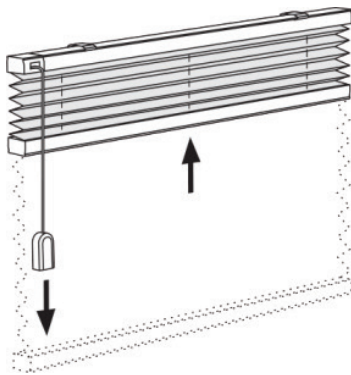
Child Safety

To protect small children from getting entangled in the chain/cord, and prevent looped cords, we strongly recommend using the child safety component.

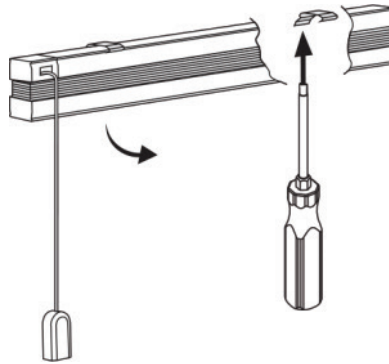
Never put any furniture or things that your child could climb onto near window blinds otherwise the child may be able to reach the chain/cord.



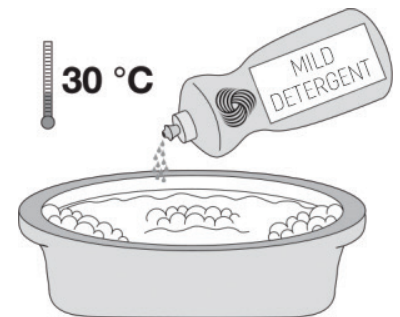
Cleaning Your Pleated Blinds



1 Raise the blind



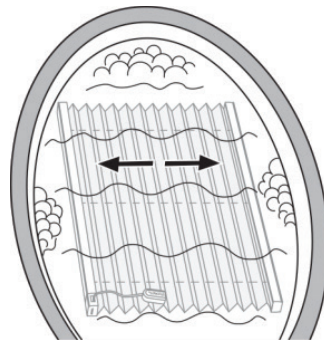
2 Remove the blind from brackets



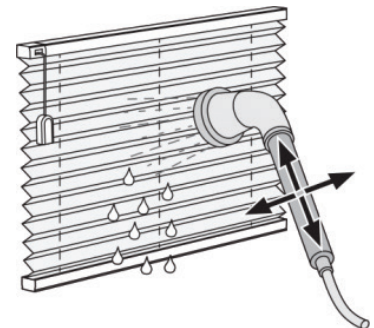
3 Fill the tub with warm water (30°C), and add small amount of gentle detergent.



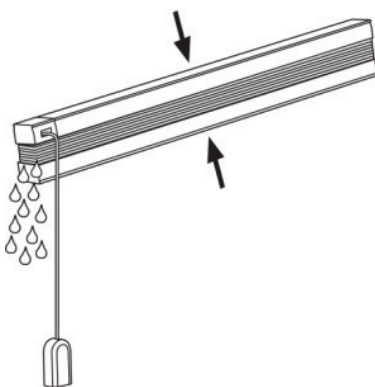
4 Extend the folds, and place the blind in to the water for 15 minutes.



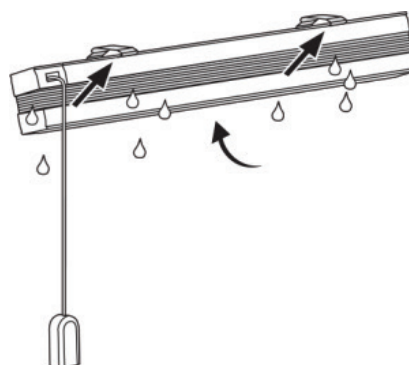
5 Open the blind as much as can in the water, and swish gently. Before removing the blind from the water, gather the folds together.



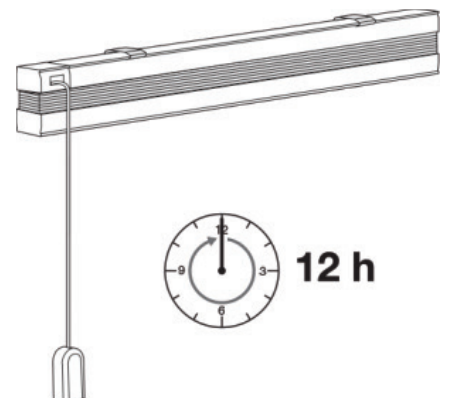
6 Rinse the blind with clean water.



7 Raise the blind and squeeze it gently to drain it.



8 Attach it to the brackets.



9 Keep the blind raised until it dries (approximately 12 hours).